

An assessment of flood extent in cropland was conducted to map and quantify the impacts of flooding on agricultural land. This analysis utilized VIIRS (Visible Infrared Imaging Radiometer Suite) satellite imagery along with a cropland mask from Africa Digital Earth, integrating irrigated and rainfed from WaPOR (Monitoring land and water productivity by Remote Sensing). The rapid assessment helps identifying the most severely affected states, enabling more targeted responses and efficient resource allocation to aid recovery efforts.

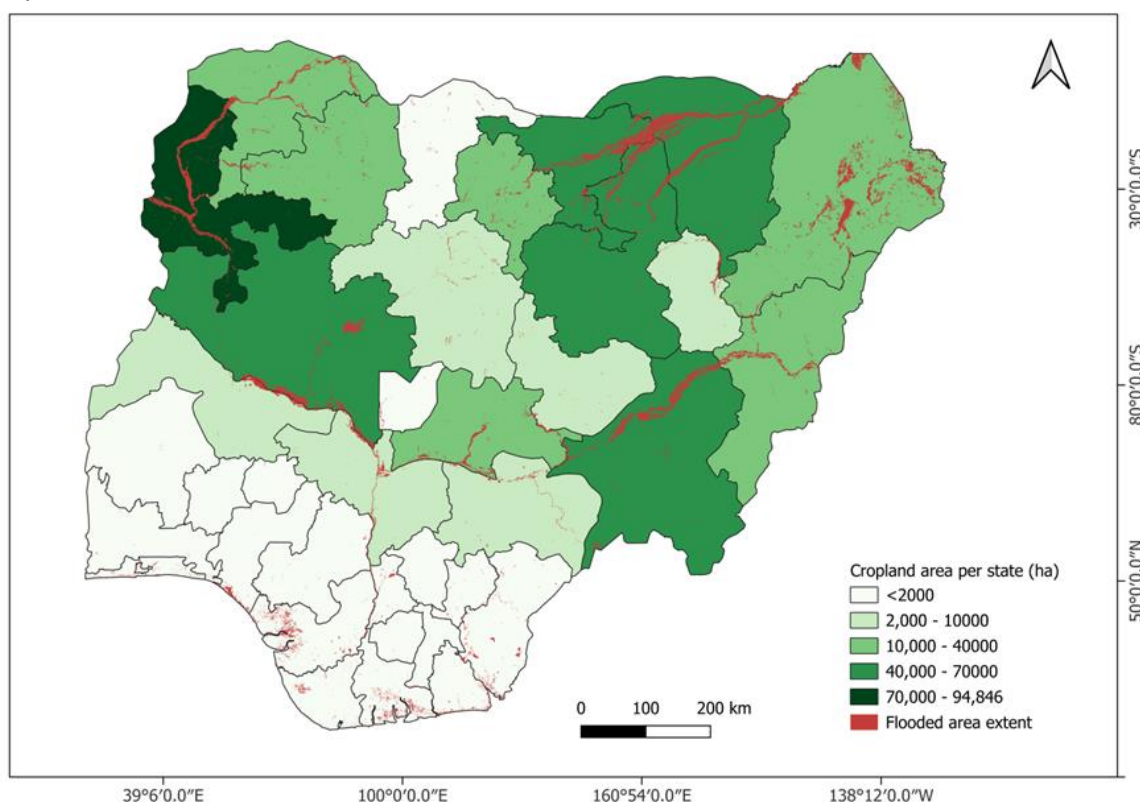


Figure 1: Flooded cropland in states in Nigeria<sup>1</sup>

Table 1: Flooded cropland in most impacted states

State	Cropland area (ha)	Flooded cropland (ha)	(%)
Kebbi	2 086 053	94 845	4.55
Taraba	1 892 983	65 522	3.46
Niger	4 088 247	61 480	1.50
Bauchi	3 068 315	57 715	1.88
Yobe	2 372 827	54 952	2.32
Jigawa	1 755 678	47 451	2.70
Borno	1 518 219	36 976	2.44
Nasarawa	1 246 752	30 527	2.45
Sokoto	1 308 418	19 887	1.52
Adamawa	1 931 176	19 226	1.00
Others	15 246 476	81 838	0.54
<b>Total</b>	<b>36 515 144</b>	<b>570 420</b>	<b>1.56</b>

### Key Findings

- During 3-14 September 2024, 570 420 ha of cropland experienced flooding representing about 1.56% of the cropland area in the country.
- Eight states experienced flooding over 30 000 hectares of cropland.
- The most five affected states by cropland flooding are Kebbi (94 845 ha, 5%), Taraba (65 522 ha, 3%), Niger (61 480 ha, 2%), Bauchi (57 715 ha, 2%) and Yobe (54 952 ha, 2%).