



# GIEWS Update

## The Republic of Haiti

### Already critical levels of acute food insecurity likely to deteriorate

#### Highlights

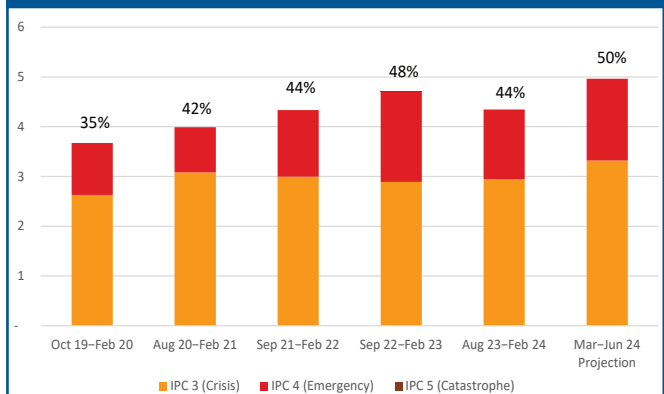
- Food insecurity in Haiti has been worsening since 2018 due to economic setbacks and below-average agricultural production, exacerbated by escalating violence.
- Heightened violence has disrupted food supply, hindered access to essential services, increased internal displacements of people and affected delivery of humanitarian assistance.
- The number of people facing high levels of acute food insecurity is projected to reach a record level of 5 million, half of the population analysed, between March and June 2024.

#### Record-high acute food insecurity projected between March and June 2024

The food insecurity situation in Haiti has deteriorated gradually since 2018 due to a multidimensional crisis driven by macroeconomic challenges, spiking food prices and below-average agricultural production due to frequent natural disasters and lack of agricultural inputs, exacerbated by escalating armed gang violence amid a slow political transition.

According to the latest Integrated Food Security Phase Classification (IPC) analysis, the number of people facing high levels of acute food insecurity (IPC Phase 3 or above [Crisis or worse]) is projected at a record level of 5 million between March and June 2024, about half of the population analysed (Figure 1).<sup>i</sup> Haiti now ranks among the countries with the highest prevalence of acute food insecurity in the world.<sup>ii</sup> About 1.6 million people classified in IPC Phase 4 (Emergency) are located in the metropolitan communes of Cité de Soleil, Crois des Bouquets and Port-au-Prince as well as in parts of Artibonite, Grand-Anse and Ouest departments (Map 1). The projection marks a significant deterioration in acute food insecurity compared to the August 2023–February 2024

**Figure 1: Evolution of population classified in IPC Phase 3 or above (Crisis or worse) (October 2019–June 2024)**

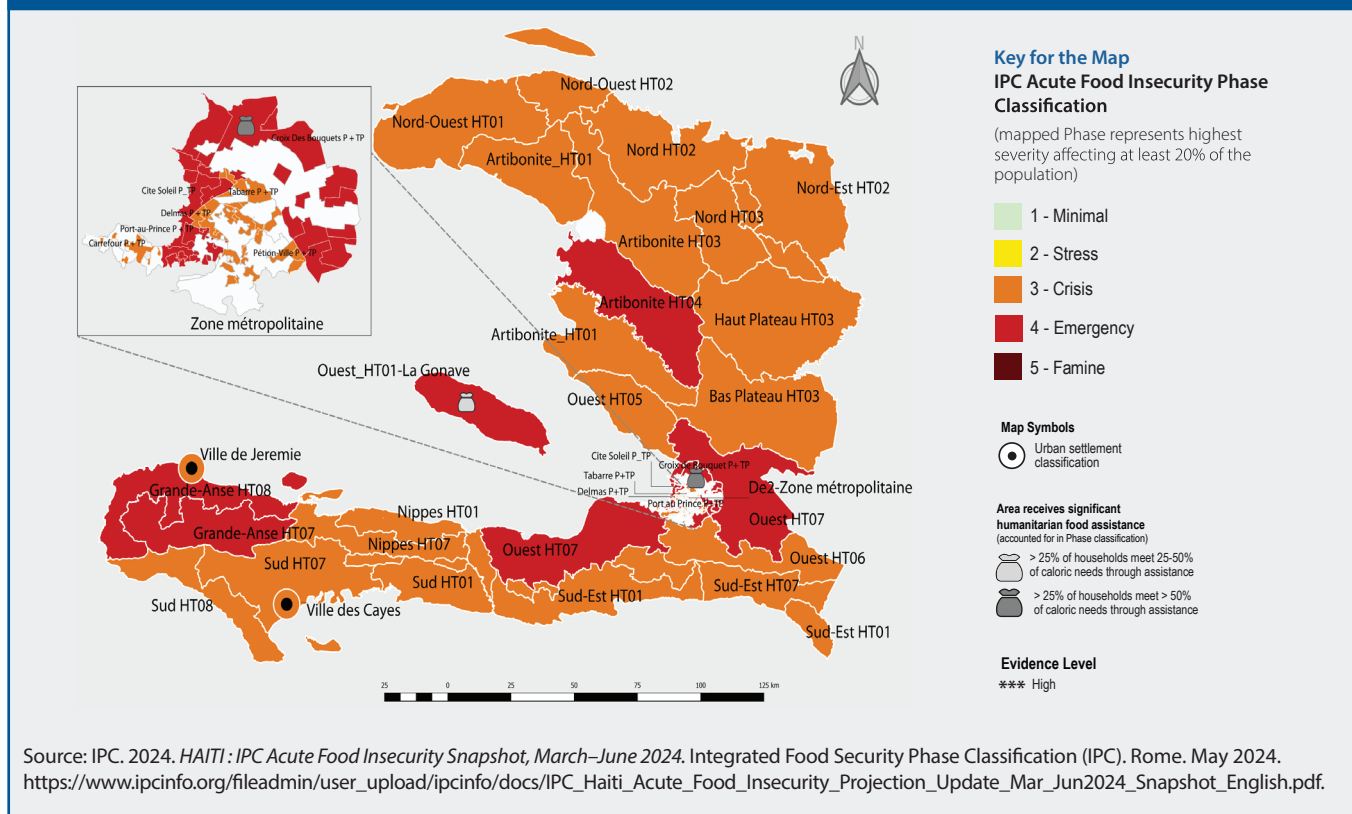


Note: Percentages refer to the share of people classified in IPC Phase 3 (Crisis) and above, out of the population analysed

Source: Author's own elaboration based on data from the Integrated Food Security Phase Classification (IPC), May 2024. <https://www.ipcinfo.org/ipc-country-analysis/details-map/en/c/1156884/?iso3=HTI>

period, due to elevated levels of food prices and the intensification of gang violence limiting access to markets and food. Considering the volatile situation, immediate action is imperative to prevent the risk of deterioration towards catastrophic conditions of acute food insecurity as they already occurred during the September 2022–February 2023 period.

**Map 1: Acute food insecurity projection (March–June 2024)**



## Escalating violence aggravates already critical levels of acute food insecurity

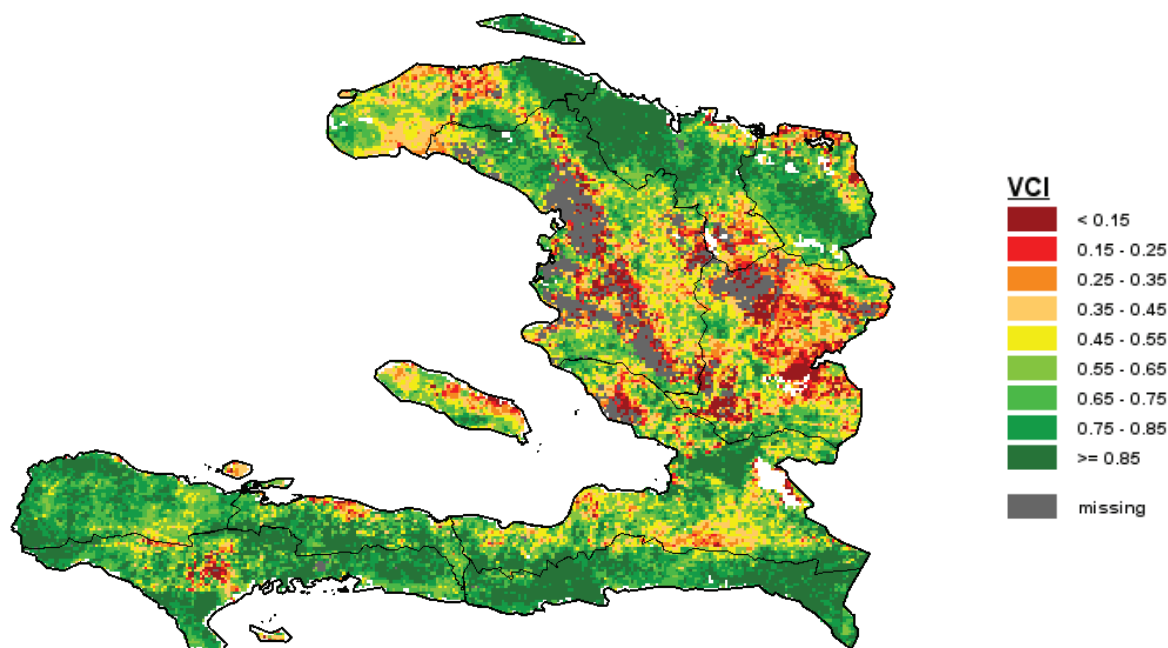
The security situation in the country has dramatically deteriorated in early 2024. Access to essential services, such as health care and education, as well as to markets is severely restricted, particularly in urban areas. Since November 2023, the food supply to markets in the southern region has been reduced due to roadblocks on the main road to the capital, Port-au-Prince, with consequent upward pressure on food prices. Imports of all goods, including food, have been suspended since early March 2024, following disruptions at the ports and airports, with a further detrimental impact on local food availability. Gangs continue to attack infrastructures in the capital, including schools, hospitals, government buildings and electricity stations, curtailing their operations. The closure of an important oil terminal on 22 April 2024 due to repeated attacks by armed groups could lead to even more severe restrictions in gasoline supply and a further rise in prices.<sup>iii</sup> Humanitarian agencies also face increasing challenges in delivering assistance due to roadblocks and looting of supplies. As of March 2024, there were 362 550 internally displaced persons (IDPs) in the country, more than double compared to a year before,<sup>iv</sup> mainly from the department of Ouest, where

Port-au-Prince is located. The heightened insecurity has also caused abandonment of about 3 000 hectares in the eastern part of Artibonite Department, where insecurity has intensified in recent years<sup>v</sup> and which correspond to about 5 percent of the country's total rice sowings. Instead, farmers decided to cultivate crops in lower lands in western Artibonite, although they are less equipped with irrigation facilities and more prone to flooding. The planned UN-authorized Multinational Security Support Mission is unlikely to take place in the near future, as hurdles, including low funding, are expected to persist.<sup>vi</sup>

## Unfavourable prospects for cereal production in 2024

Below-average rainfall amounts between mid-February and mid-April 2024 resulted in soil moisture deficits and below-average crop conditions in key cereal producing departments of Ouest, Centre and Artibonite (Map 2). Ongoing planting operations of the main *printemps* season maize and paddy crops are reportedly delayed due to insufficient soil moisture.<sup>vii</sup> High production costs and low availability of inputs are expected to keep plantings at below-average levels, likely lowering cereal production in the 2024 main season. Domestic cereal production has steadily declined since 2018, reducing

## Map 2: Vegetation Condition Index as of April 2024



Note: Based on METOP-AVHRR. WGS84, geographic Lat/Lon.

Source: FAO. 2024. *Earth Observation*. Global Information and Early Warning System on Food and Agriculture (GIEWS). Rome. Cited May 2024. <http://www.fao.org/giews/earthobservation/index.jsp?lang=en>.

the availability of staple foods and affecting agricultural livelihoods. Above-average precipitation amounts are forecast between June and August 2024 and are likely to replenish soil moisture deficits and improve conditions for crop development. However, if excessive rains materialize at crop maturation stage or harvesting period, they could diminish yields or constrain harvesting operations. In addition, above-average temperatures are forecast throughout the main cropping season, which, combined with above-average rainfall amounts, are likely to foster pest infestations. The 2024 hurricane season (June–November) is forecast to be above average,<sup>viii</sup> further raising risks of crop losses and damage to livelihoods and infrastructure.

### High prices continue limiting access to food

In February 2024, the annual food inflation rate stood at 32 percent,<sup>x</sup> severely limiting access to food by vulnerable households, whose purchasing power has already been eroded by double-digit inflation rates between 2016 and 2023.<sup>x</sup> Prices of domestically produced maize meal and black beans in March 2024 were overall higher year-on-year in most markets,<sup>xi</sup> due to the reduced domestic outputs in 2023, compounded by high transport costs and difficult

access to markets. The cost of a typical food basket has steadily increased during the first four months of 2024 in Ouest Department and, in mid-April, it was 20 percent higher than in January 2024.<sup>xii</sup> Insecurity, by hindering the functioning of key markets and limiting trade flows, placed additional upward pressure on prices as it caused a scarcity of some essential products due to a decrease in the number of traders in markets and increasing household demand.<sup>xiii</sup> If domestic agricultural production does not improve market supply and insecurity persists, prices of staple foods will likely remain at high levels in the remainder of 2024, with further negative consequences on access to food.

### FAO plans to assist over half a million people in 2024

In the Humanitarian Needs and Response Plan 2024, FAO plans to improve self-reliance of vulnerable farming families and strengthen their resilience by boosting agricultural and livestock production. FAO requires USD 42.6 million to assist 528 000 people in 2024 to improve their production of staple foods and livestock by distributing seeds (beans, rice, cassava and vegetables), small animals and fertilizers as well as providing materials to protect livestock assets.<sup>xiv</sup>

## Notes

- i. **IPC.** 2024. "Haiti: Près de 5 millions de personnes, soit la moitié de la population haïtienne analysée, connaissent des niveaux élevés d'insécurité alimentaire aiguë". *IPC Acute Food Insecurity Analysis - March 2024–June 2024*. Rome, Italy. 22 March 2024. [https://www.ipcinfo.org/fileadmin/user\\_upload/ipcinfo/docs/IPC\\_Haiti\\_Acute\\_Food\\_Insecurity\\_Projection\\_Update\\_Mar\\_Jun2024\\_Report\\_French.pdf](https://www.ipcinfo.org/fileadmin/user_upload/ipcinfo/docs/IPC_Haiti_Acute_Food_Insecurity_Projection_Update_Mar_Jun2024_Report_French.pdf).
- ii. **FSIN and GLOBAL NETWORK AGAINST FOOD CRISES.** 2024. *Global Report on Food Crises 2024*. Food Security Information Network and Global Network Against Food Crises. May 2024. <https://www.fsinplatform.org/sites/default/files/resources/files/GRFC2024-full.pdf>.
- iii. **OCHA.** 2024. *Haiti Emergency Situation Report No. 20 (As of 24 April 2024)*. Jerusalem. 24 April 2024. <https://reliefweb.int/report/haiti/haiti-emergency-situation-report-no-20-24-april-2024>.
- iv. **IOM.** 2023. *Haiti (Central America, North America and the Caribbean)*. International Organization for Migration (IOM), DTM Global support. Grand-Saconnex. Cited May 2024. <https://dtm.iom.int/haiti>
- v. **WFP.** 2024. *Haiti: WFP VAM Bulletin - Food security analysis, February 2024*. Port-au-Prince. 1 March 2024. <https://reliefweb.int/report/haiti/haiti-wfp-vam-bulletin-food-security-analysis-february-2024>.
- vi. **CRISIS GROUP.** 2024. *Will a New Government Halt Haiti's Nosedive? What has driven the recent gang offensive in Haiti, and what are security conditions in the country like now?* International Crisis Group, Q&A/Latin America & Caribbean. 21 March 2024. <https://www.crisisgroup.org/latin-america-caribbean/haiti/will-new-government-halt-haitis-nosedive>.
- vii. **FEWSNET.** 2024. *Haiti – Key Message Update: The worsening sociopolitical and security conditions, impacting prices and availability of basic food products, further deteriorated food security conditions in Haiti*. March 2024. <https://fewsn.net/latin-america-and-caribbean/haiti/key-message-update/march-2024>.
- viii. **CSU.** 2020. *Seasonal Hurricane Forecasting*. Colorado State University (CSU). Colorado. Cited May 2024. <https://tropical.colostate.edu/forecasting.html>.
- ix. **WFP.** 2024. *Economic explorer - Inflation*. World Food Programme (WFP), Vulnerability Analysis and Mapping (VAM). Rome. Cited May 2024. <https://dataviz.vam.wfp.org/economic/inflation>.
- x. **IMF.** 2022. *Haiti*. International Monetary Fund (IMF). Cited May 2024. <https://www.imf.org/en/Countries/HTI>.
- xi. **FAO.** 2024. *Food Price Monitoring and Analysis (FPMA) Tool. Monitoring and analysis of prices*. Online tool. FAO Rome, Italy. Cited May 2024. <https://fpma.fao.org/gIEWS/fpmat4/#/dashboard/tool/domestic>.
- xii. **WFP.** 2024. *Haiti: WFP VAM Bulletin - Food Security Analysis, April 2024*. Port-au-Prince. 19 April 2024. <https://reliefweb.int/report/haiti/haiti-wfp-vam-bulletin-food-security-analysis-april-2024>.
- xiii. **WFP.** 2024. *Haiti: WFP VAM Bulletin - Food Security Analysis, April 2024*. Port-au-Prince. 19 April 2024. <https://reliefweb.int/report/haiti/haiti-wfp-vam-bulletin-food-security-analysis-april-2024>.
- xiv. **FAO.** 2024. *Haiti: Humanitarian Needs and Response Plan 2024*. Rome. February 2024. <https://doi.org/10.4060/cc9501en>.

This report was prepared by the **Global Information and Early Warning System (GIEWS)** of the Markets and Trade Division of FAO. The updates focus on developing anomalous conditions aimed at providing early warnings, as well as latest and more elaborate information than other GIEWS regular reports on the food security situation of countries, at both national and sub-national levels. None of the information in this report should be regarded as statements of governmental views.

For more information visit the **GIEWS Website** at: <http://www.fao.org/giews/en/>

**Enquiries may be directed to:**

Global Information and Early Warning System on Food and Agriculture (GIEWS)  
Markets and Trade - Economic and Social Development  
[GIEWS1@fao.org](mailto:GIEWS1@fao.org)

**Food and Agriculture Organization of the United Nations (FAO)**

Rome, Italy

The **Global Information and Early Warning System on Food and Agriculture (GIEWS)** has set up a mailing list to disseminate its reports. To subscribe, submit the Registration Form on the following link: [http://newsletters.fao.org/k/Fao/markets and trade english giews world](http://newsletters.fao.org/k/Fao/markets%20and%20trade%20english%20giews%20world).

The designations employed and the presentation of material in this information product do not imply the expression of any opinion whatsoever on the part of the Food and Agriculture Organization of the United Nations (FAO) concerning the legal or development status of any country, territory, city or area or of its authorities, or concerning the delimitation of its frontiers or boundaries. The mention of specific companies or products of manufacturers, whether or not these have been patented, does not imply that these have been endorsed or recommended by FAO in preference to others of a similar nature that are not mentioned. Dashed lines on maps represent approximate border lines for which there may not yet be full agreement.

ISSN 2707-1723 [Print]

ISSN 2707-1731 [Online]

© FAO, 2024



Some rights reserved. This work is made available under the Creative Commons Attribution-NonCommercial-ShareAlike 3.0 IGO licence (CC BY-NC-SA 3.0 IGO; <https://creativecommons.org/licenses/by-nc-sa/3.0/igo/legalcode>).

Under the terms of this license, this work may be copied, redistributed and adapted for non-commercial purposes, provided that the work is appropriately cited. In any use of this work, there should be no suggestion that FAO endorses any specific organization, products or services. The use of the FAO logo is not permitted. If the work is adapted, then it must be licensed under the same or equivalent Creative Commons license. If a translation of this work is created, it must include the following disclaimer along with the required citation: "This translation was not created by the Food and Agriculture Organization of the United Nations (FAO). FAO is not responsible for the content or accuracy of this translation. The original [Language] edition shall be the authoritative edition."

Disputes arising under the licence that cannot be settled amicably will be resolved by mediation and arbitration as described in Article 8 of the licence except as otherwise provided herein. The applicable mediation rules will be the mediation rules of the World Intellectual Property Organization <http://www.wipo.int/amc/en/mediation/rules> and any arbitration will be conducted in accordance with the Arbitration Rules of the United Nations Commission on International Trade Law (UNCITRAL).

**Third-party materials.** Users wishing to reuse material from this work that is attributed to a third party, such as tables, figures or images, are responsible for determining whether permission is needed for that reuse and for obtaining permission from the copyright holder. The risk of claims resulting from infringement of any third-party-owned component in the work rests solely with the user.

**Sales, rights and licensing.** FAO information products are available on the FAO website ([www.fao.org/publications](http://www.fao.org/publications)) and can be purchased through [publications-sales@fao.org](mailto:publications-sales@fao.org). Requests for commercial use should be submitted via: [www.fao.org/contact-us/licence-request](http://www.fao.org/contact-us/licence-request). Queries regarding rights and licensing should be submitted to: [copyright@fao.org](mailto:copyright@fao.org).