

WHAT
ARE

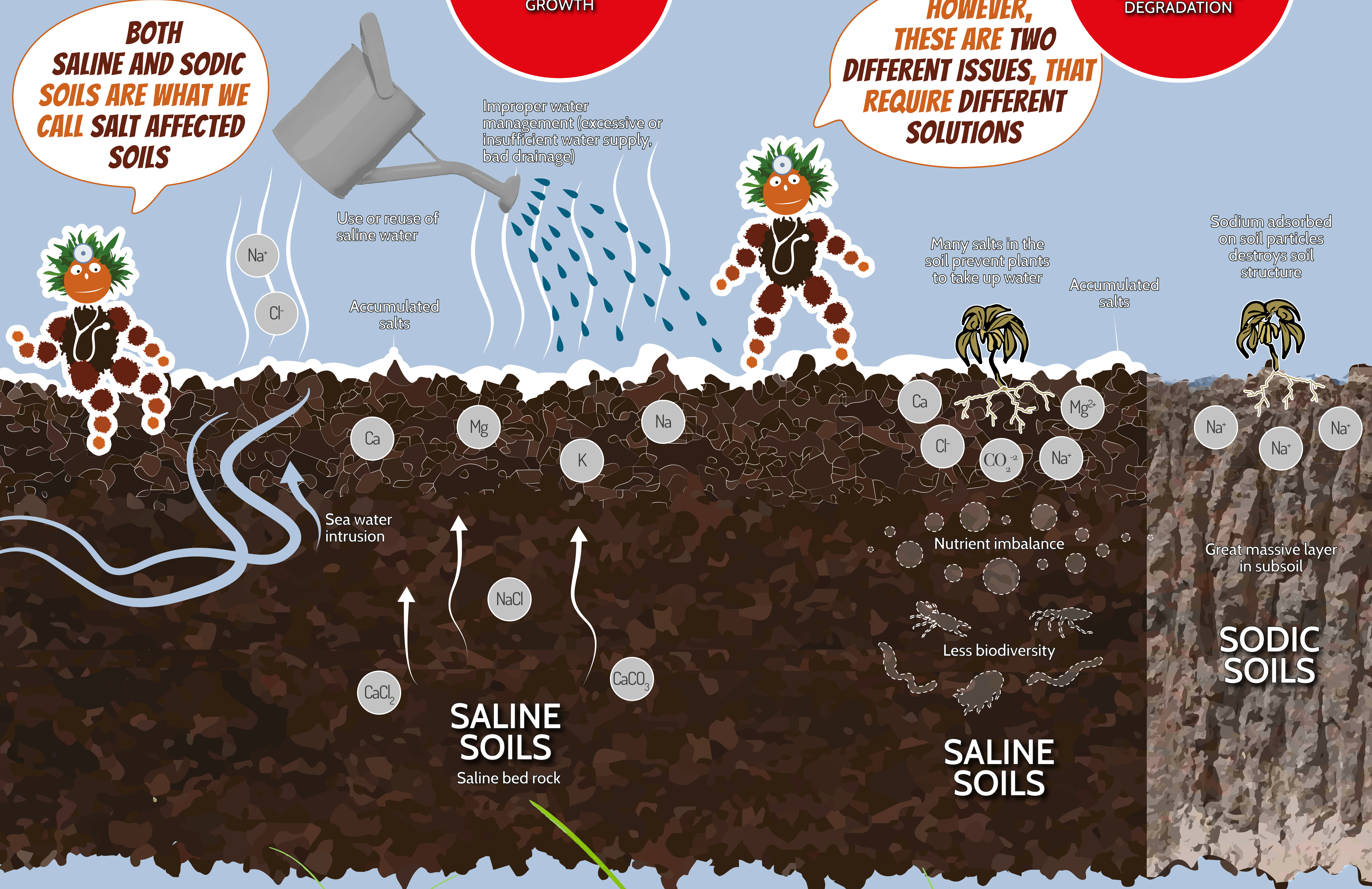
Saline and sodic soils

THESE SOILS HAVE A HIGH LEVEL OF SOLUBLE SALTS, WHICH CAN NEGATIVELY IMPACT OR EVEN INHIBIT PLANT GROWTH

THESE SOILS HAVE A HIGH AMOUNT OF ADSORBED SODIUM (Na+) WHICH CAUSES SOIL STRUCTURE DEGRADATION

BOTH SALINE AND SODIC SOILS ARE WHAT WE CALL SALT AFFECTED SOILS

HOWEVER, THESE ARE TWO DIFFERENT ISSUES, THAT REQUIRE DIFFERENT SOLUTIONS



1 VISUAL ASSESSMENT

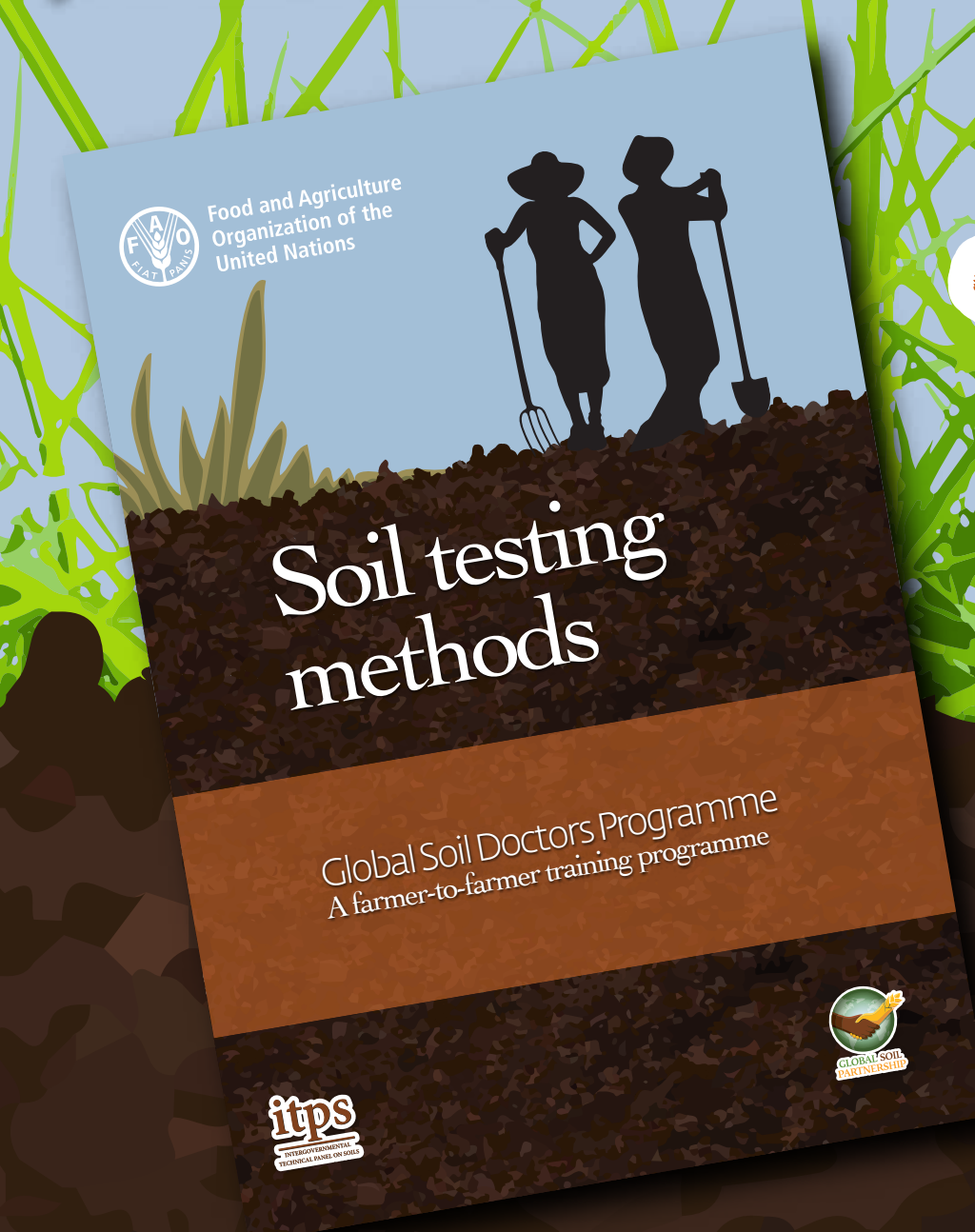


2 pH POSTER



3 SOIL TESTING METHODS MANUAL

If the proper tools are available, measure your soil's electrical conductivity or EC. If the value is higher than 2 - 4 dS/m, your soil is saline



LET'S CHECK IF YOUR SOIL IS AFFECTED BY SALTS!



Thanks to the financial support of

