



Food and Agriculture
Organization of the
United Nations

SUSTAINABLE CROPLAND AND FOREST MANAGEMENT IN PRIORITY AGRO - ECOSYSTEMS OF MYANMAR (SLM-GEF PROJECT)

© FAO



PROJECT HIGHLIGHTS

PROJECT DURATION

5 years: July 2016 to June 2021
(No cost extension scheduled)

FUNDING

Global Environment Facility (GEF)

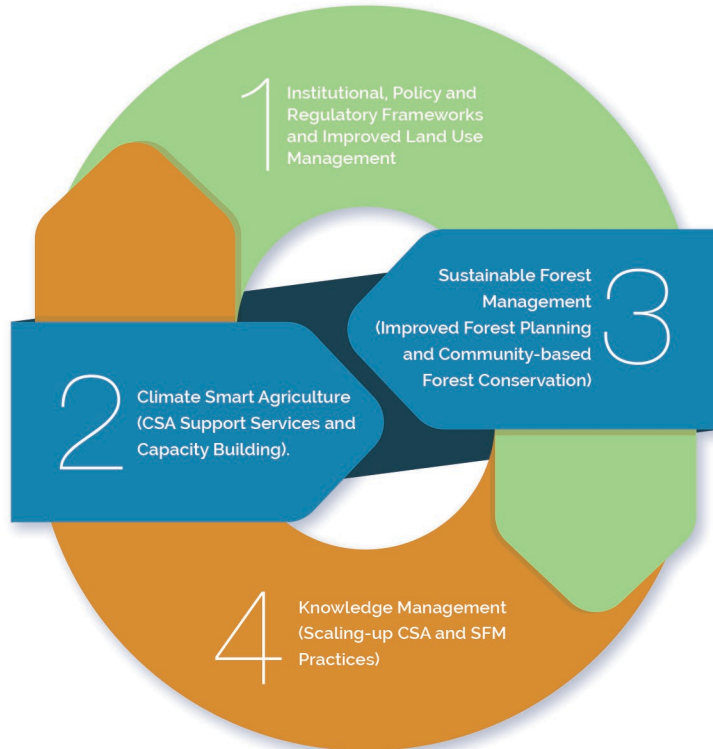
PROJECT OBJECTIVE

To build the capacity of farming and forestry stakeholders to mitigate climate change and improve land condition by adopting climate-smart agriculture (CSA), sustainable forest management (SFM) and sustainable land management (SLM) policies and practices.

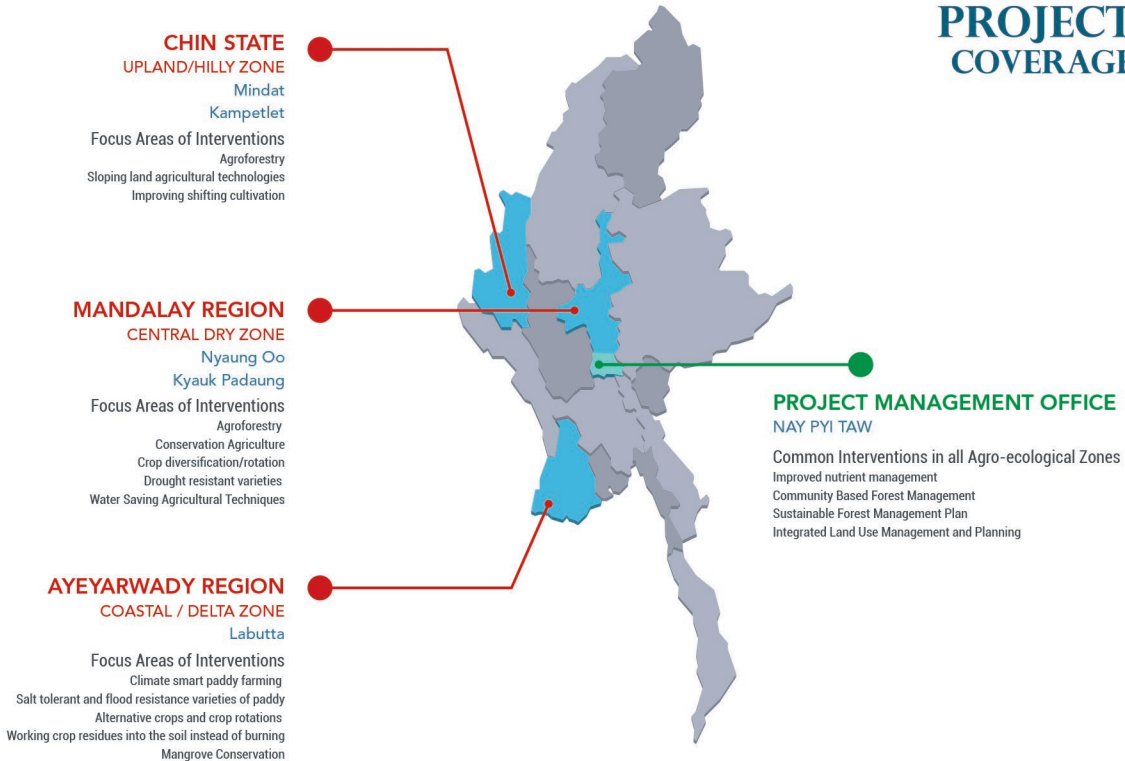
IMPLEMENTING ORGANIZATIONS

FAO in collaboration with Ministry of Natural Resources and Environmental Conservation (MoNREC) and Ministry of Agriculture, Livestock and Irrigation (MoALI)

MAIN COMPONENTS



PROJECT COVERAGE



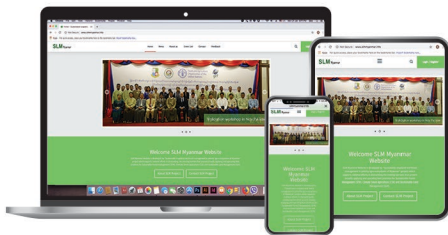
KEY ACTIVITIES AND ACHIEVEMENTS OF THE PROJECT

- › An assessment on legal and institutional frameworks and policy improvement strategy conducted for Sustainable Land Management (SLM), Sustainable Forest Management (SFM), and Climate Smart Agriculture (CSA).
- › Capacity building on "Legal and institutional aspects of SLM, SFM and CSA" organised at National level, Regional level and Parliaments.
- › Land use and land cover (LULC) maps and associated mapping products developed for the five pilot townships and support provided for the design and implementation of township level land use plans (LUP) integrating land management with PLUP at village tract level and LUP at township level based on SLM's usage of drone technology and land-use implementation guidelines.
- › Ecosystem-based sustainable forest management training curriculum for Myanmar Forest School (MFS) developed and teaching materials and forest mensuration tools provided to MFS and Central Forestry Training Development enter (CFDTC).
- › Ecosystem-based SFM Planning Manual and Implementation Manual developed and district forest management plans for Labutta, Myingyan and Mindat are under revision according to these ecosystem-based SFM handbooks
- › Curricula developed for academic courses at YAU and State Agricultural Institutes (SAIs) and for in-service training for MoALI staffs integrating CSA .ToT on CSA organized for more than 100 representatives from YAU, SAI, and relevant government departments from Nay Pyi Taw and 14 States/Regions.
- › Farmer Field School (FFS) Curricula and Handbooks for three agro-ecological zones developed and are being used.
- › Training of Trainers (ToT) on CSA and FFS organized in five pilot townships for DoA staffs, representatives from Service Providers and selected Lead Farmers.

- › 96 FFSs established in five pilot townships and farmer to farmer trainings were organised to promote CSA techniques and practices.
- › Township level Agricultural Extension Plans developed for five pilot townships.
- › Crop prioritization exercise completed and value chain analysis and need assessment of priority crops in three agro-ecological zones organised.
- › A National Climate Smart Agriculture Center established at Yezin Agriculture University and is operationalized to provide a wide range of services to promote CSA in Myanmar. Two National Workshop on "Promoting CSA in Myanmar" and "Green Ecology in Myanmar" organised jointly by the FAO and National CSA Center.
- › Twenty one Community Forest sites in 20 villages in five pilot Townships established. Operationalization of those CFs is in progress.
- › Cash for work organised to establish mangrove trees nursery and distribution of 2325 ecostoves.
- › Ten trainings on "Fundamentals of Community Forestry" organized for Deputy Range Officers in both pilot and outside of the pilot townships.
- › Community Forest instruction 2019 translated into 15 ethnic languages, National CF strategic action plan and SoP for CF and consultation for revision of forest rules conducted.
- › Communication materials on CSA and SFM with website, posters, pamphlets, books, animation, success stories, and videos developed and disseminated.
- › National Knowledge Management training was conducted at Nay Pyi Taw.
- › Periodic evaluations conducted including two rapid assessments on the impact of COVID-19 on rural farmers.

SLM Myanmar website

www.slmmyanmar.info



Website and Social platform for all CSA, SFM and SLM practices in Myanmar

MAIN FEATURES

- Project news
- Project activity timeline
- CSA practices
- Downloadable CSA, SFM, SLM documents
- Social platform
- Creating group and share information, links, photos, videos
- Writing CSA, SFM, SLM article
- Dialog features (Forum)

Partners



CESVI



YEZIN AGRICULTURAL UNIVERSITY



People for development



CFNWG

CONTACT PERSON

Ms Thu Zar Myint

National Project Coordinator, Director, Land Use Division,
Department of Agriculture
Ministry of Agriculture, Livestock and Irrigation
Tel: 09 5 101 612, Email: zarmyint1@gmail.com

U Ngwe Thee

National Project Coordinator, Deputy Director,
Forest Department, Ministry of Natural Resources and
Environmental Conservation
Tel: 09 250 107 754, Email: ngwethee@gmail.com

Mr Xavier Bouan

Senior Technical Advisor
SLM-GEF Project, Food and Agriculture Organization of the United Nations
Tel: 09 894 097 710, Email: Xavier.Bouan@fao.org



CONTACT PROJECT OFFICE

 SLM-GEF Project, Office No.39 Compound, Forest Department, Ministry of Natural Resources and Environmental Conservation, Nay Pyi Taw, Myanmar

 09 423334625  slmmyanmarinfo@gmail.com

 www.slmmyanmar.info

FAO REPRESENTATION OFFICE IN MYANMAR

 United Nations Building, No. 20 - 25, Kyin Tone Street, Zawana Theidi Quarter, Oattara Thiri Township, Nay Pyi Taw, Myanmar

 09 254 968 619  FAO-MM@fao.org

 www.fao.org/myanmar



Some rights reserved. This work is available under a CC BY-NC-SA 3.0 IGO licence