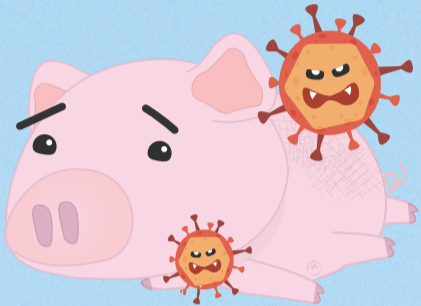
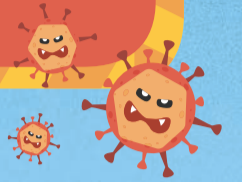


STOP AFRICAN SWINE FEVER

PROTECT WILD PIGS, PROTECT ALL PIGS!



WHAT IS AFRICAN SWINE FEVER (ASF)?

African swine fever (ASF) is a deadly disease of domestic and wild pigs. There is no effective vaccine nor treatment against it. ASF is not a danger to human health, but it is devastating for the farming economy.



Several factors can contribute to an ASF outbreak among wild pigs. This might include direct contact with infected pigs; contaminated environment, food and water; and human activities.

Wild pigs play a crucial role in the ecosystem and protecting would ensure that we're protecting our domesticated pigs.

WHAT CAN YOU DO TO PROTECT WILD PIGS FROM ASF?



1 Do not feed wild pigs



2 Report sick or dead pigs



3 Avoid contact with wild pigs



4 Dispose waste properly



5 Practice good hunting practices

WILD PIGS CAN BECOME INFECTED WITH ASF VIRUS VIA SEVERAL ROUTES.



Direct contact: Pigs can become infected with ASF virus by coming into contact with blood, saliva urine or feces from infected wild or domestic pigs.



Contaminated food: Pigs become infected by eating contaminated food, such as kitchen waste, or carcasses of infected pigs. This happens when pigs scavenge near habitations or farms.



Environmental contamination: ASF can survive in the environment, in soil, in water, and on surfaces. Pigs become infected with ASF from environments, where infected pigs have been present.



Contaminated water: Wild pigs become infected by drinking from water sources contaminated through the presence of infected pigs or their carcasses.



Human activity: Activities such as hunting, farming, and transportation spread ASF. hunters and rangers can carry the virus on clothing, equipment or vehicles, and spread it to both wild and domestic pigs.



Movement of infected animals: Movement and migration of infected wild pigs spreads ASF to new areas. This is an issue among wild pigs which migrate frequently.