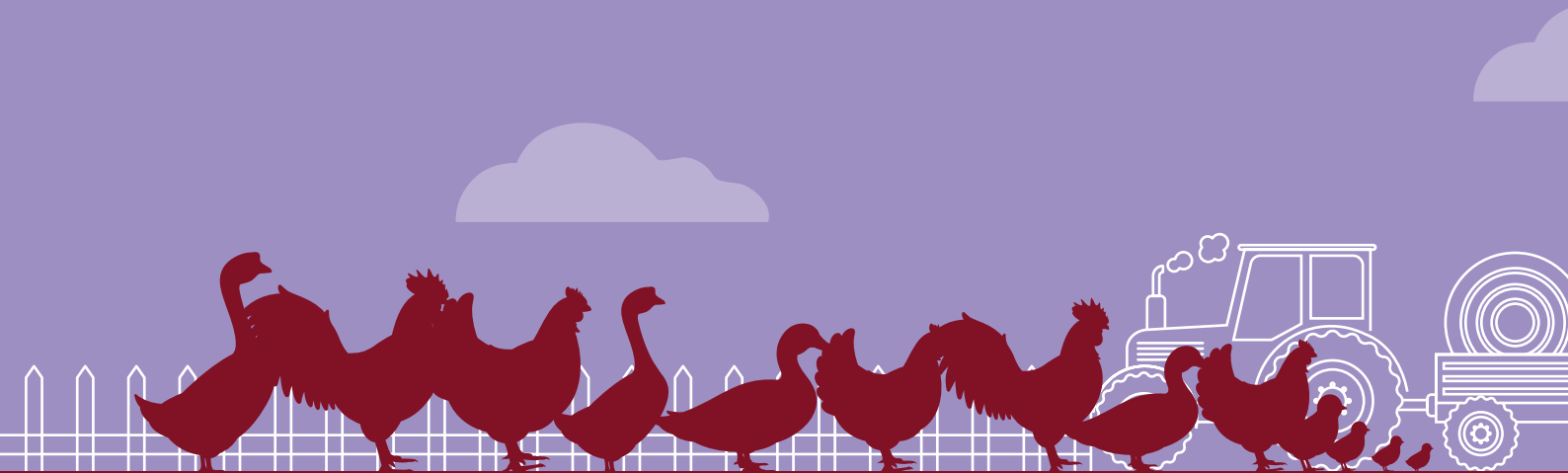


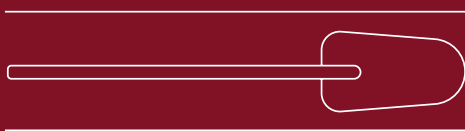


Food and Agriculture
Organization of the
United Nations

EVIDENCE-BASED RISK MANAGEMENT ALONG THE LIVESTOCK PRODUCTION AND MARKET CHAIN



LAO PEOPLE'S DEMOCRATIC REPUBLIC



USAID
FROM THE AMERICAN PEOPLE

**Australian
Aid** 

LAO PEOPLE'S DEMOCRATIC REPUBLIC



IMPROVING POULTRY HEALTH AND MANAGEMENT USING A COMMUNITY-BASED APPROACH

The demand for poultry and poultry products is increasing in Luangprabang and its surrounding provinces. To meet this demand, the province now imports a large amount of poultry from neighbouring countries. Importing poses a significant risk to the vulnerable local poultry population with the introduction of threats such as transboundary animal diseases, which includes highly pathogenic avian influenza (HPAI). Luangprabang, located in the north of the Lao People's Democratic Republic has reported HPAI outbreaks in the past and the risk of reintroduction is always high. In order to reduce this risk, the Department of Livestock and Fisheries (DLF), the Government of Lao People's Democratic Republic, and the Food and Agriculture Organization of the United Nations (FAO) have implemented 'evidence-based risk management along the livestock production and market chain.' In addition, related activities were also implemented in three high-risk villages of Luangprabang with support from the United States Agency for International Development (USAID) and Australia's Department of Foreign Affairs and Trade (DFAT).

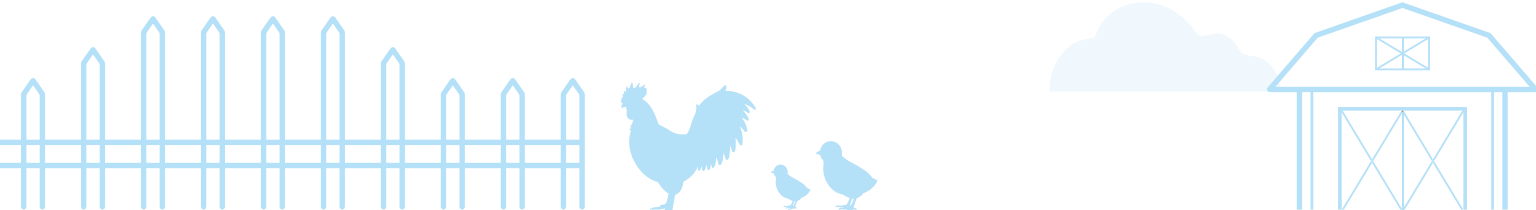
A community-based approach was used to improve poultry health and management by organizing farmer groups in each village. This approach focused on developing a sustainable business enterprise by raising a niche breed of poultry and is predicted to meet the needs of local poultry farmers and market demands.

“

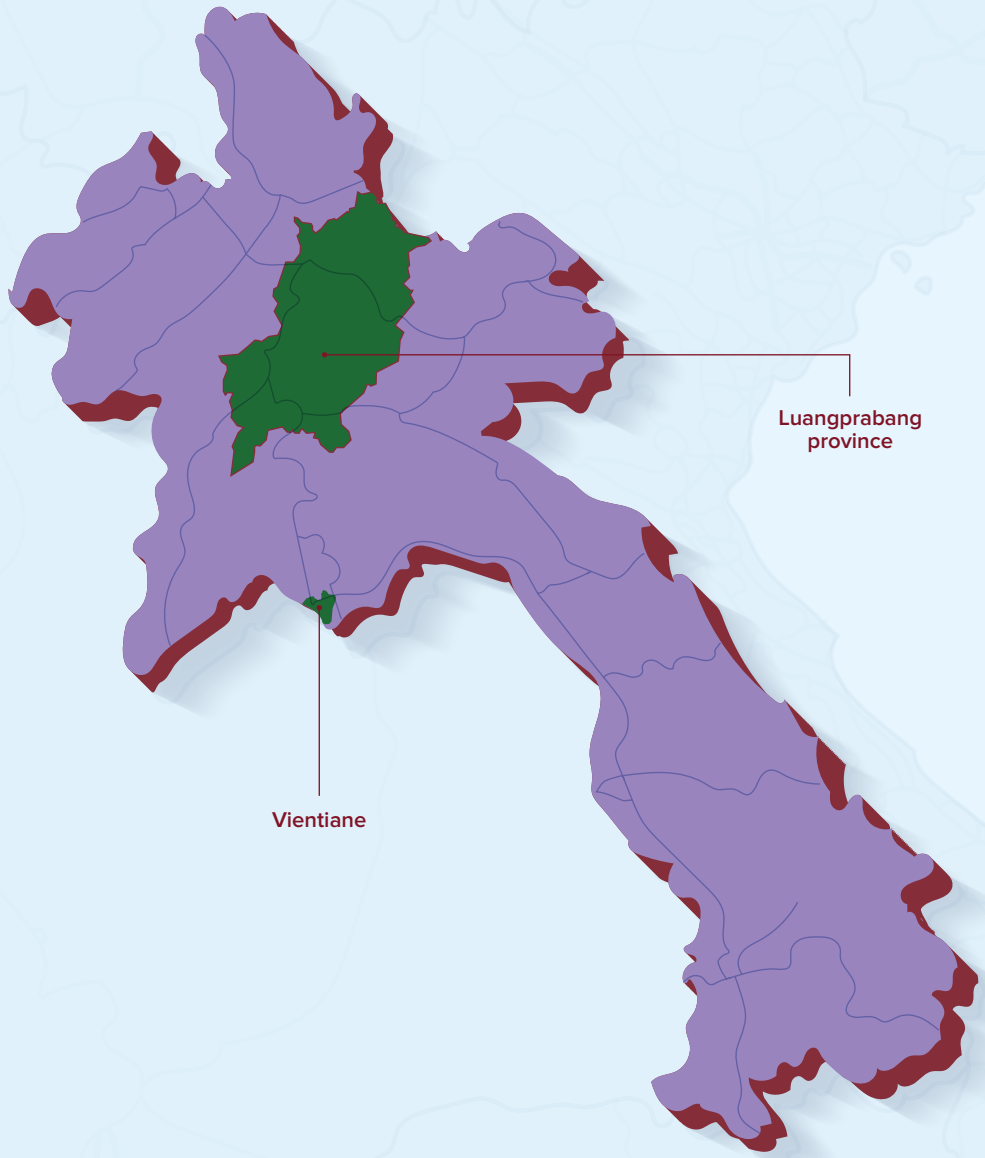
Using an evidence based approach, we aim to reduce risks in the market chain as a whole. Piloting the development of a community based enterprise to improve poultry flock health and production by strengthening the capacity for implementing good flock health and biosecurity practices will enable the long term sustainability and ownership of risk mitigation approaches.

– Dr Wantanee Kalpravidh, Regional Manager of the FAO Emergency Centre for Transboundary Animal Diseases (ECTAD) in Asia.

”



Location of Luangprabang province

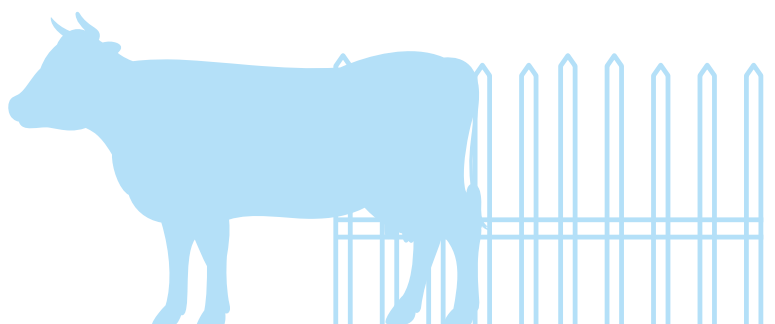
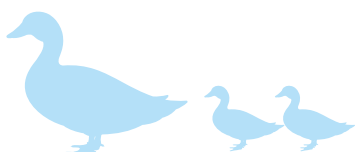
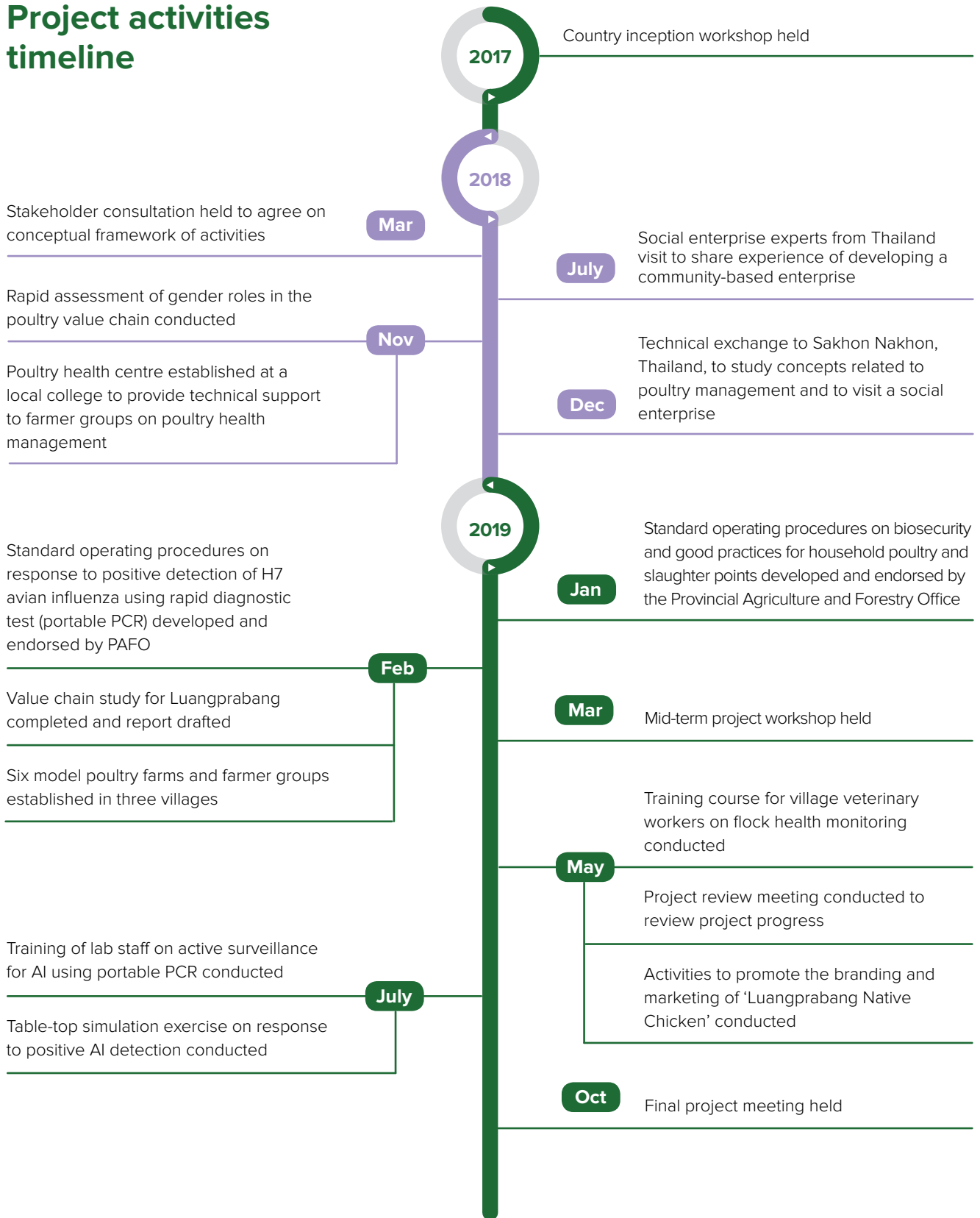


Luangprabang province

Vientiane

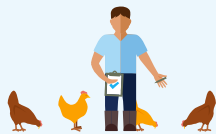
Map source: ©Shutterstock
This map is based on UN map no. 4170 rev. 17 February 2019

Project activities timeline



Project outputs

01 Capacity to manage cross-border movement of poultry and poultry products strengthened for the northern provinces



5 provincial staff trained on the use of portable polymerase chain reaction (PCR) for early detection of HPAI

02 Capacity to manage movement of poultry and poultry products into the targeted villages strengthened



1 value chain study for Luangprabang province conducted



1 standard operating procedure (SOP) for HPAI surveillance and response developed

03 Poultry production and health practices at the village level improved



2 SOPs for basic biosecurity and poultry flock health management for households and small-scale farmers developed and endorsed by the Provincial Agriculture and Forestry Office (PAFO)



12 trainers trained on community flock health management and disease risk reduction



55 farmers trained on biosecurity, management, vaccination and production recording

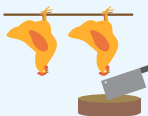


48 farmers registered in farmer groups for improved poultry production



5 provincial and district staff trained as auditors for farmer groups

04 Management of poultry sale areas within local fresh markets (live bird markets) and their associated value chains improved



1 SOP developed on good biosecurity practices for household slaughter points



2 live bird markets identified for active surveillance for early detection

05 Community participation in disease reporting, surveillance and response strengthened



5 provincial staff trained on disease recognition to strengthen provincial capacities on surveillance and response



10 village veterinary workers trained on biosecurity and best practices, disease recognition, and vaccination

06 Awareness of all stakeholders improved for safer poultry production at village level



3 trainings conducted for farmer groups on modified standards and best practices for farms and households

07 Poultry health and production management improved as female input suppliers are trained and pass on information to farmers



1 female input supplier trained for disseminating information on good poultry management practices

Successes

Success story

Establishment of a poultry health centre

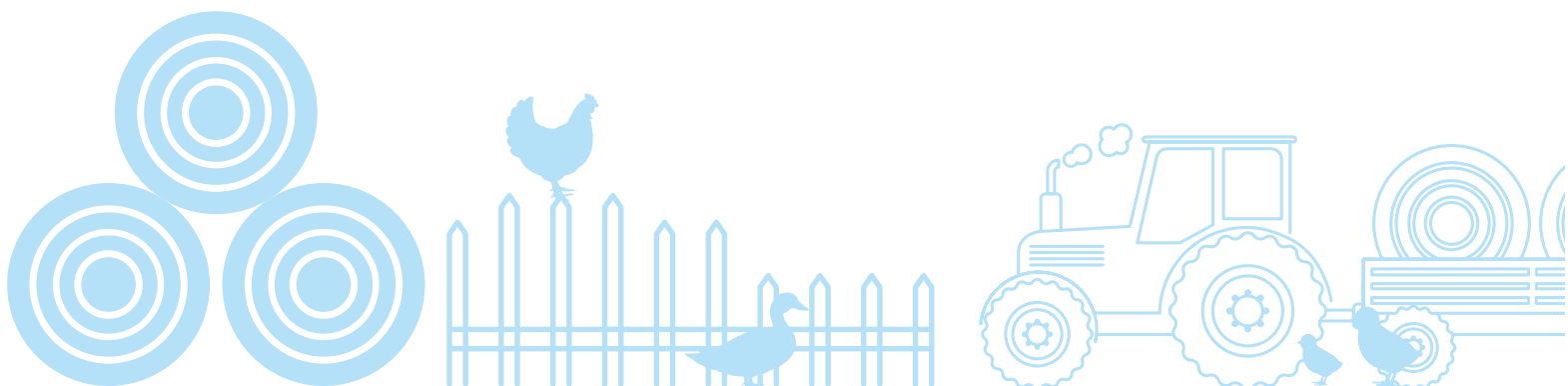
FAO and national partners collaborated with the National Agriculture and Forestry College in Luangprabang to establish a Poultry Health Centre (PHC) based on their campus. The PHC is the technical support center for training and providing practical hands-on training to farmers. Farmer groups have been set up in the three villages where poultry flock health is actively managed through community participation.



Success story

Community based enterprise: Luangprabang Native Chicken

The farmer groups, technically guided by the PHC, are now developing a community-based enterprise to improve the production of a niche breed of native chicken that they have called “Luangprabang Native Chicken.” They will raise organic chickens without antibiotics but will instead treat them with medicinal herbs. The producing flocks are expected to have improved growth rates and taste compared to traditional native chickens. The chickens will be marketed as “happy chicks, healthy chicks.” A promotional event has been conducted at the Luangprabang night market to support visibility of the brand and create awareness among consumers.



Success story

Technical exchange in Sakhon Nakhon, Thailand

A technical exchange was arranged with the Puparn Royal Development Study Centre in Northeast Thailand. The aim was for farmers to learn good practices on poultry health and management. Main topics discussed during the technical exchange focused on community poultry health management. This allowed participating farmers and Lao People's Democratic Republic authorities to share experiences and lessons learned in disease risk reduction.



Success story

Role of women along the poultry value chain in Luangprabang: Key findings and recommendations

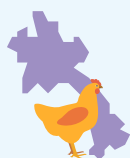
Traditionally, chickens and ducks are raised in the backyard for home consumption with excess sold for cash. Backyard production is low input and pure local breeds are normally raised. They are mainly fed crops, are rarely vaccinated and are administered a variety of drugs when needed. Women play a major role in this traditional small-scale value chain, ranging from farmers to traders, retailers and input suppliers.



Following up on the recommendations from the rapid gender assessment, the project strengthened women's role in risk reduction. By engaging the Lao Women's Union (LWU) and the female development officer of the National Agriculture and Forestry College as trainers, sustainability of trainings on good biosecurity, poultry health management and cross breeding practices will be ensured. Additionally, a local female poultry input supplier was also trained on feeding, vaccination and disease control so that information could be disseminated regularly to customers. LWU have also been involved in training the women poultry farmers in developing processed products from the chickens for economic incentives.

The aim is to create a vertical integration among farmers, input suppliers, traders and retail vendors, most of whom are women, to work on disease prevention.

Conclusions and way forward



The project has engendered progress in the province by creating self-sufficiency in poultry production and reducing HPAI risks through a community-based enterprise using a participatory approach. The Luangprabang Native Chicken brand will bring economic benefits which will ensure sustainability of the risk reduction initiatives.



It is envisaged that the development of a community-based enterprise, with future geographical indication for the "Luangprabang Native Chicken" brand, will ensure the sustainability of the risk reduction practices and support government policy on improving livestock production and ensuring food security and safe trade.



CONTACT

Food and Agriculture Organization of the United Nations (FAO)
Regional Office for Asia and the Pacific
39 Phra Athit Road, Bangkok 10200, Thailand

For more information, please visit:
www.fao.org/emergencies/fao-in-action/ectad/en/



Some rights reserved. This work is available
under a CC BY-NC-SA 3.0 IGO licence